

This pattern originally appeared in the 1993 Fall/Winter issue of Studio by White Design Magazine and is reproduced here with Terri Burns' kind permission.



## Lined Christmas Stockings

These stockings were originally featured in Terri's book, "Timely Treasures". With Terri's kind permission we are able to share them with the readers of Studio by White Design. Because these stockings are lined, you won't have to worry about children or elves catching their fingers or candy canes on the fairisle floats!

**Gauge/ Stitch Size:** These stockings do not have to fit anyone or be of a specific size so the gauge is really not important. SS 5 E/ N on chunky machines, SS 9 EON on standard machines.

**Machine:** Chunky Punch card or Electronic machines with ribber (OR Standard Punch card or Electronic using EON). Sample stockings were knitted on SK155 and SK890 with ribber. Note that rib can be mock rib to knit without ribber.

**Accessories:** Garter Bar.

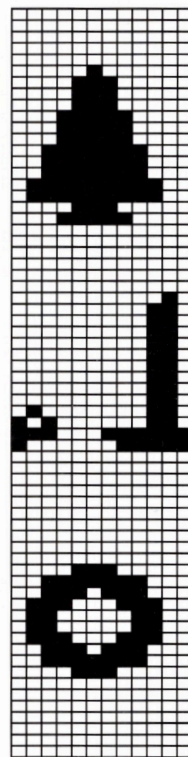
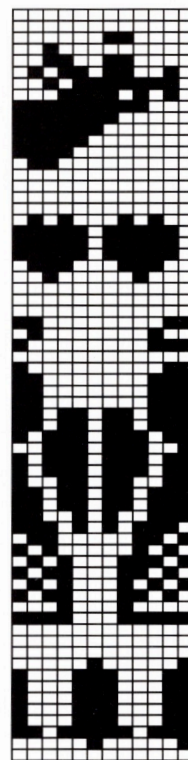
**Materials:** 2 oz each of red, green, and white 4-ply worsted weight, wool or acrylic. Small amounts of 4-ply worsted in royal, pink, gold, black, or brown as called for by specific designs. Small amount of Nomis 2/11 (or similar weight yarn) for lining in white. Size G crochet hook, punch cards or mylars for fairisle designs.

### Knitting Directions

**Lining:** With white Nomis 2/11 e-wrap C/O 52 STS. With SS 1 on the chunky (SS 6 standard) K 66 Rs, moving edge weights as you inc 1 ST each side at RC 6, 16, 26, 36, and 46 to 62 STS total. Remove on garter bar or S/O and set aside.

**Cuff:** Use green or red worsted to knit 2 X 2 rib over a width of 62 NDLS with beds in P and K 13 Rs rib. Tr STS to MB.

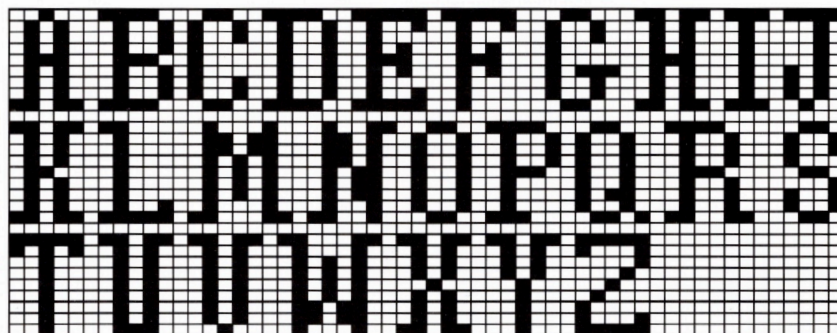
**Stocking:** After cuff, set RC 000 and cont in stockinet with SS 5 (SS 9 standard EON) and white worsted. K 15 Rs for the name band. Hang lining from garter bar or scrap, knit side facing bed. Insert punch card (remember to insert designs upside down), K 66 Rs fairisle, dec 1 ST each side, at RC 38, 48, 58, 68, and 78. At RC 81, bring up lining and hang the e-wrap C/O edge onto the NDLS. **Heel:** Use a contrast color. COL, put all NDLS in HP except 13 on the L. Russel levers (l). \*K 1 R to the RT, hold 1 NDL on RT, K 1 R.\*\* Rep from \* to \*\* until only 4 NDLS rem knitting and COL. \*\*Push the last NDL that was brought to HP back to WP, K 2 R \*\*\*. Rep \*\* to \*\*\* until 13 NDLS are knitting



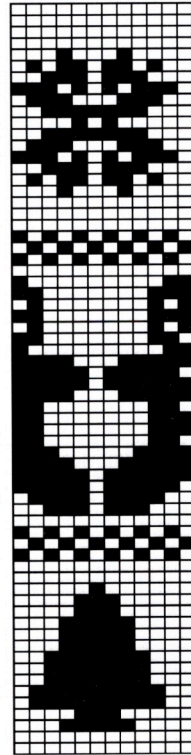
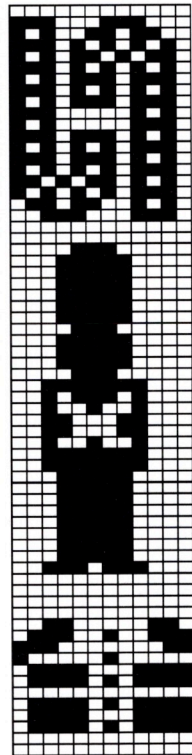
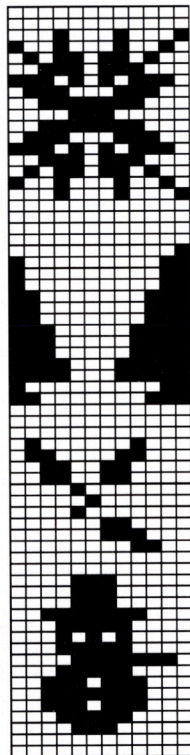
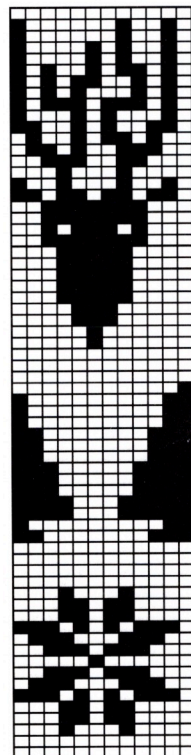
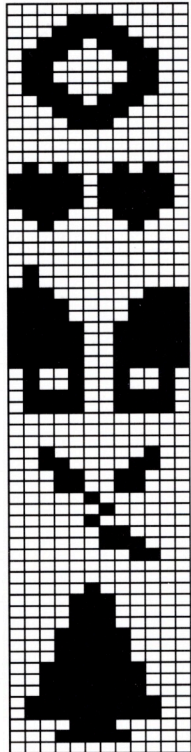
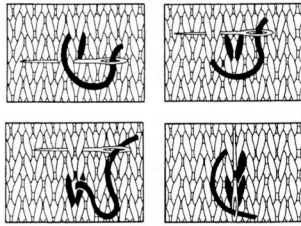
6



Use this alphabet for duplicating stitching names.



Duplicate stitch chart



again. Wrap the HP NDL on the last R to prevent a hole. Cut yarn, bring those 13 NDLS to HP and move COR without knitting to rep for the RT heel, reversing directions. *Instep:* Change colors and K 30 Rs over all NDLS. *Toe:* Use same CC and directions as for heel. S/O.

**Finishing Directions**

Weave toe together. Sew up back seam by hand or sewing machine. Cut all yarn tails from fairisle to 1", tuck ends inside and seam lining. By machine, stitch wrong sides tog, as close to the edge as possible, backstitching at the top and the bottom onto the main stocking seam. With crochet hook and 1 strand of each green and red, single crochet a 6" chain and fasten to inside of cuff at seam. You can also attach a jingle bell to this loop or at the toe. Block the stocking firmly.

**Name Notes:** It is easiest to add names in duplicate stitch after the stockings are knitted (illustration above right) If you want to sell the stockings at bazaars or retail shops, you may want to attach a bag with yarn, alphabet chart and directions for duplicate stitch so that customers can personalize their own stockings. If you want to knit the name in fairisle, you must hand select the letters reversed and upside down. Inc the lining by 15 Rs and hang immediately for the cuff.

*"Timely Treasures"* is loaded with other great crafts projects like these stockings and can be ordered directly from Knitting and Sew Forth (see List of Suppliers' on inside back cover—that's where you will find stocking number 7).

Terri Burns is a Studio by White educator who has worked extensively with the stretchable fabric paints and a wide variety of embellishments.

All of these designs are shown for Chunky, 12 stitch repeats. If you are knitting them on a standard gauge machine, remember to punch the cards for every other needle and to knit the designs with the S/L knob on L. Look at the photographs for ideas on color combinations and remember that these are for Christmas so be festive!

